

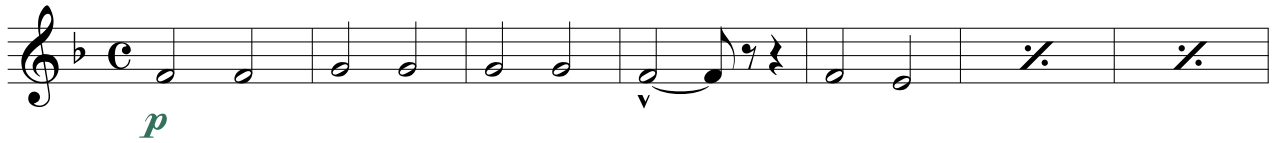
Zumbi, O Rei dos Palmares

Trompa E \flat 3

Fantasia

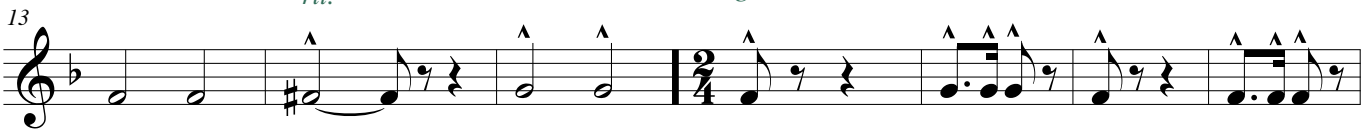
Eraldo Estevam da Trindade

Andante $\text{♩} = 70$



rit.

Alegretto $\text{♩} = 94$



rit.

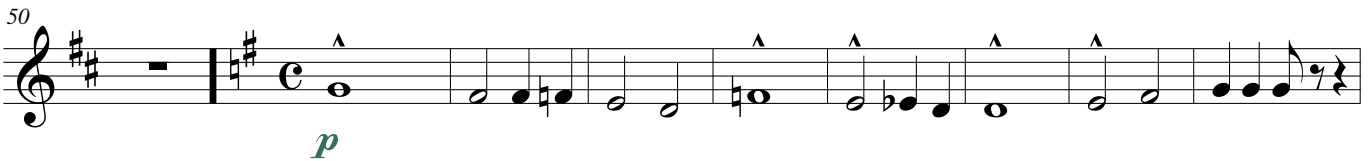
Andantino $\text{♩} = 88$



rit.



Andantino $\text{♩} = 82$



Zumbi, O Rei dos Palmares

67 *accel.* *Andantino* ♩ = 90

p

Detailed description: Musical staff 67-73. Key signature: one sharp (F#). Time signature: 4/4. The staff contains seven measures of music. Measures 67-70 are marked with accents (^) and a dynamic of *p*. Measure 71 has a key signature change to two sharps (F#, C#). Measures 72-73 continue with accents (^) and a dynamic of *p*.

74

Detailed description: Musical staff 74-80. Key signature: two sharps (F#, C#). Time signature: 4/4. The staff contains seven measures of music, all with accents (^).

81

Detailed description: Musical staff 81-86. Key signature: two sharps (F#, C#). Time signature: 4/4. The staff contains six measures of music, all with accents (^). The final measure (86) has a key signature change to three sharps (F#, C#, G#).

Valsa ♩ = 80

87

p

Detailed description: Musical staff 87-94. Key signature: three sharps (F#, C#, G#). Time signature: 3/4. The staff contains eight measures of music, all with accents (^) and a dynamic of *p*.

Scherzando

95

Detailed description: Musical staff 95-101. Key signature: three sharps (F#, C#, G#). Time signature: 3/4. The staff contains seven measures of music, all with accents (^).

102 *rit.*

Detailed description: Musical staff 102-109. Key signature: three sharps (F#, C#, G#). Time signature: 3/4. The staff contains eight measures of music, all with accents (^). The final measure (109) has a common time signature change to 'C'.

Alegretto ♩ = 94

110

f

Detailed description: Musical staff 110-115. Key signature: three sharps (F#, C#, G#). Time signature: common time (C). The staff contains six measures of music, all with accents (^) and a dynamic of *f*.

116

ff

Detailed description: Musical staff 116-120. Key signature: three sharps (F#, C#, G#). Time signature: common time (C). The staff contains five measures of music, all with accents (^) and a dynamic of *ff*.

121 *rit.*

f *fff* *f*

Detailed description: Musical staff 121-127. Key signature: three sharps (F#, C#, G#). Time signature: common time (C). The staff contains seven measures of music, all with accents (^). The final measure (127) has a dynamic marking of *f* *fff* *f* with red arrows indicating a crescendo and decrescendo.