

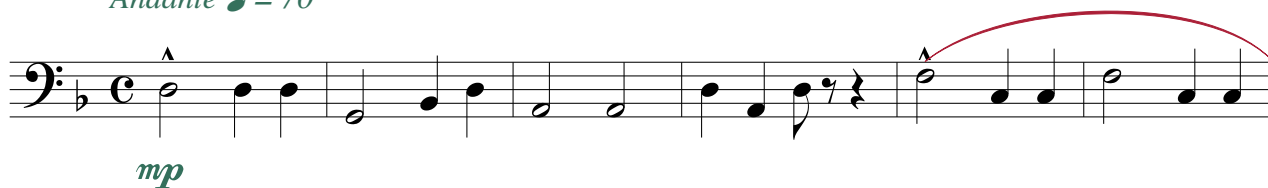
Zumbi, O Rei dos Palmares

Tuba Eb

Fantasia

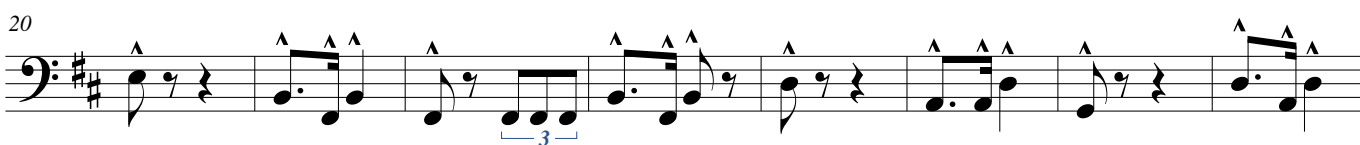
Eraldo Estevam da Trindade

Andante $\text{♩} = 70$



rit.

Alegretto $\text{♩} = 94$



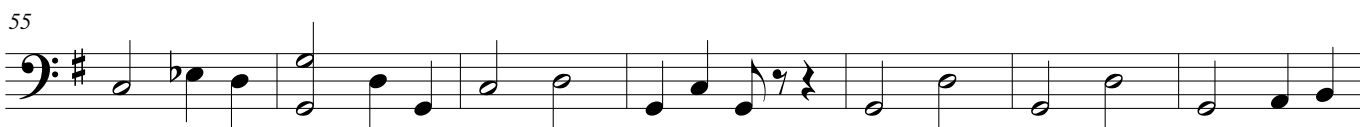
rit.

Andantino $\text{♩} = 88$



rit.

Andantino $\text{♩} = 82$



Zumbi, O Rei dos Palmares

68 *accel.* *Andantino* ♩ = 90

p

Detailed description: This musical staff covers measures 68 to 73. It begins with a bass clef and a key signature of one sharp (F#). The tempo is marked 'Andantino' with a quarter note equal to 90 beats per minute. The dynamics start with a piano (*p*) marking. The music features eighth and sixteenth notes with accents (^) and rests.

74

Detailed description: This musical staff covers measures 74 to 79. It continues the piece with similar rhythmic patterns and accents.

80

Detailed description: This musical staff covers measures 80 to 85. It continues the piece with similar rhythmic patterns and accents.

86 *Valsa* ♩ = 80

p

Detailed description: This musical staff covers measures 86 to 92. The tempo changes to 'Valsa' (Waltz) with a quarter note equal to 80 beats per minute. The key signature changes to two sharps (F# and C#), and the time signature changes to 3/4. The dynamics are marked piano (*p*).

93 *Scherzando*

Detailed description: This musical staff covers measures 93 to 100. The tempo is marked 'Scherzando'. The key signature remains two sharps (F# and C#).

101 *rit.*

Detailed description: This musical staff covers measures 101 to 108. The tempo is marked 'rit.' (ritardando). The key signature remains two sharps (F# and C#).

109 *Alegretto* ♩ = 94

f

Detailed description: This musical staff covers measures 109 to 114. The tempo is marked 'Alegretto' with a quarter note equal to 94 beats per minute. The dynamics are marked forte (*f*). The key signature remains two sharps (F# and C#).

115

ff

Detailed description: This musical staff covers measures 115 to 120. The dynamics are marked fortissimo (*ff*). The key signature remains two sharps (F# and C#).

121 *rit.*

f < *fff* > *f*

Detailed description: This musical staff covers measures 121 to 126. The tempo is marked 'rit.' (ritardando). The dynamics are marked forte (*f*), fortissimo (*fff*), and forte (*f*) with a red double-headed arrow indicating the range. The piece concludes with a double bar line.