

Suíte Folclórica Alagoana

Para Quarteto de Tubas Wagnerianas

Composição e Arranjo:
Almir Medeiros

Tuba 4

1. Dança Modal

Moderato $\text{♩} = 106$

6

11

16 *À Coda* Φ

21 1ª VEZ

27

34

41

mp

mf

mf

f

p

p

f

p

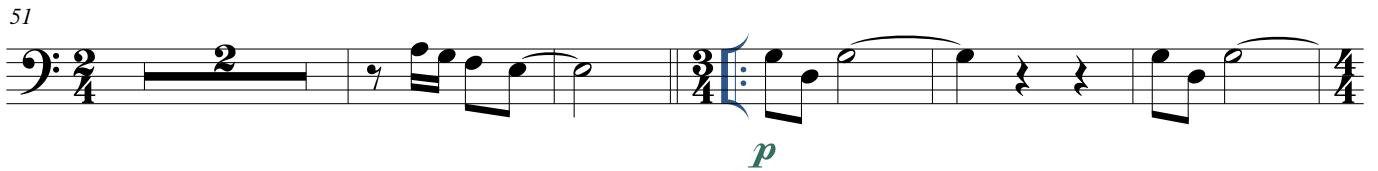
f

46



p *f*

51



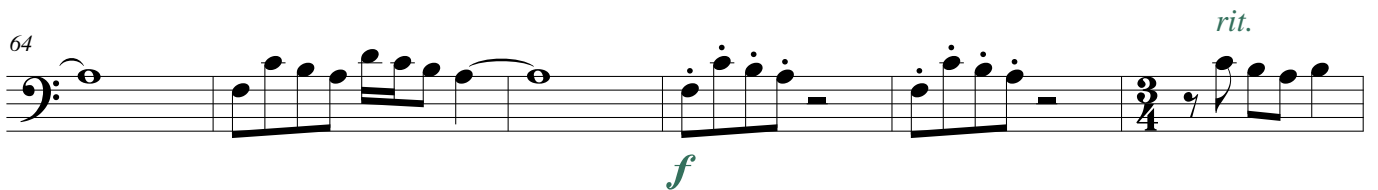
p

58



pp *mf* D.C. al Coda \emptyset

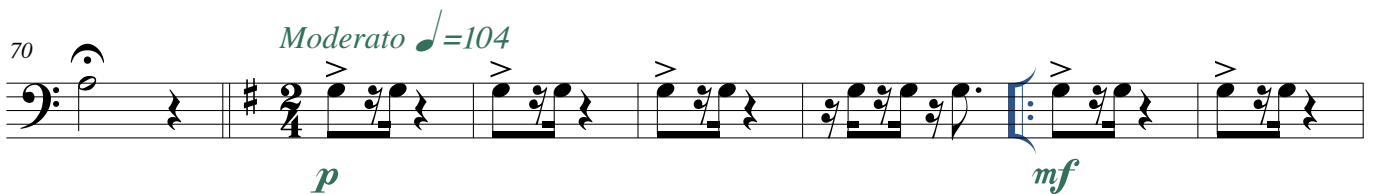
64



f *rit.*

2. Boi Alagoano

70



p *mf* Moderato $\text{♩} = 104$

77



1ª VEZ 2ª VEZ

84



90



1ª VEZ 2ª VEZ

98



106



114



123



130



139



147



157



165



171

1ª VEZ 2ª VEZ

179

187

f

3. Lamento

Largo (♩ = 54)

194

ff *p cresc.* *p cresc.*

203

mf

211

p

220

mf

230

1ª VEZ

4. Guerreiro das Alagoas

239 2ª VEZ *Allegro Brincante* ♩ = 126

pp *mf*

245

251

257

263

269 *Allegro Agitato* ♩ = 126

p cresc. *f* *p*

274

mf *p*

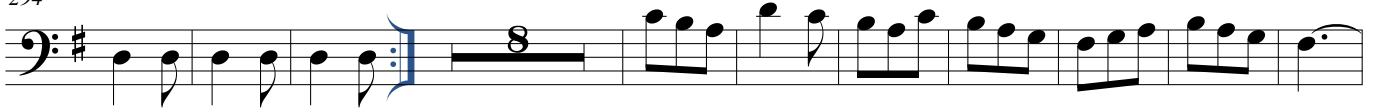
279

mf *p* *mf*

284 *Canto Responsorial* ♩ = 84

p *mf*

294



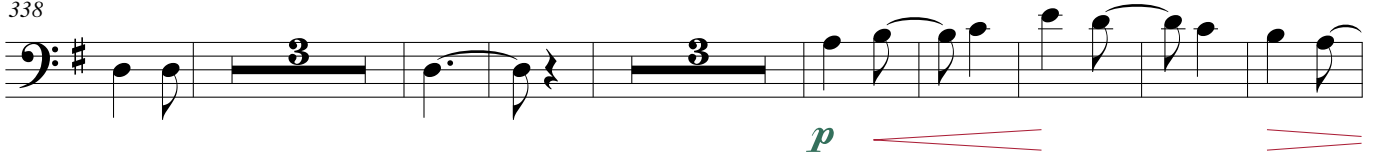
312



325



338



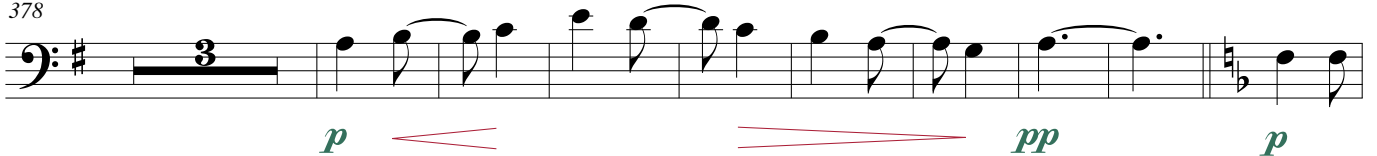
352



365



378



390



403



415



427



440



453



5. Coco Alagoano

Moderato ♩=100

465



474



483



492





501



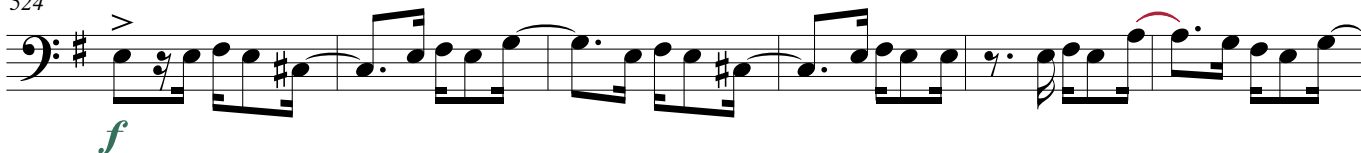
510



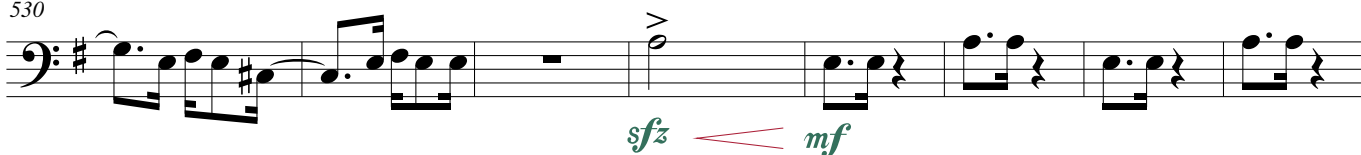
517

À Coda Φ

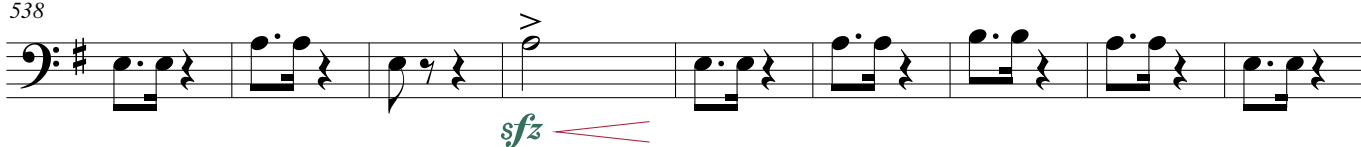
524



530



538

D.S. al Coda Φ

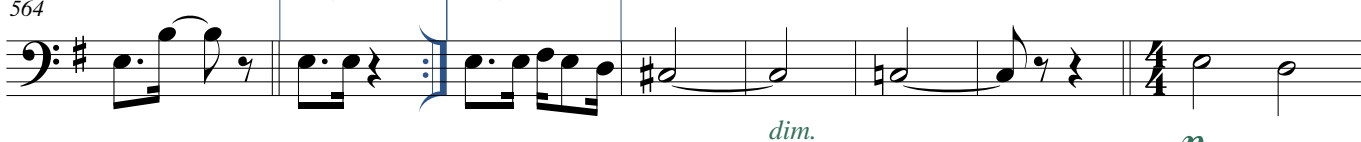
547



556



564



572

Musical staff 572 in bass clef, key of D major, 2/4 time. The staff contains a melodic line with a fermata over the final measure. A dynamic marking of *mf* is placed below the staff.

Moderato ♩=100

579

Musical staff 579 in bass clef, key of D major, 2/4 time. The staff contains a melodic line with eighth-note patterns.

584

Musical staff 584 in bass clef, key of D major, 2/4 time. The staff contains a melodic line with a fermata over the final measure. A dynamic marking of *sfz* is placed below the staff.

592

Musical staff 592 in bass clef, key of D major, 2/4 time. The staff contains a melodic line with a fermata over the final measure. Dynamic markings of *sfz* and *f* are placed below the staff.

601

Musical staff 601 in bass clef, key of D major, 2/4 time. The staff contains a melodic line with accents and dynamic markings of *p*, *cresc.*, *sfz*, and *ff*.