

# Ten. Edison Camilo de Moraes

Dobrado

Composição e arranjo:  
Eraldo Trindade

Tuba B $\flat$

*p* *cresc.*

10 *f* *mf*

19 *ff* *mf* *f*

30 *p*

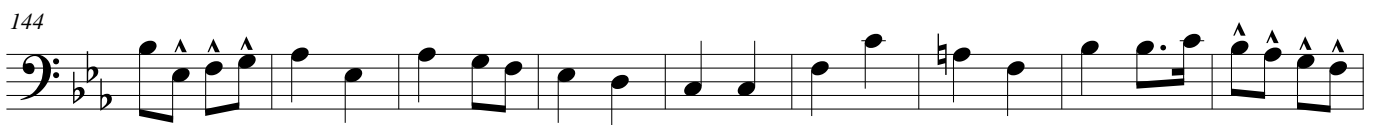
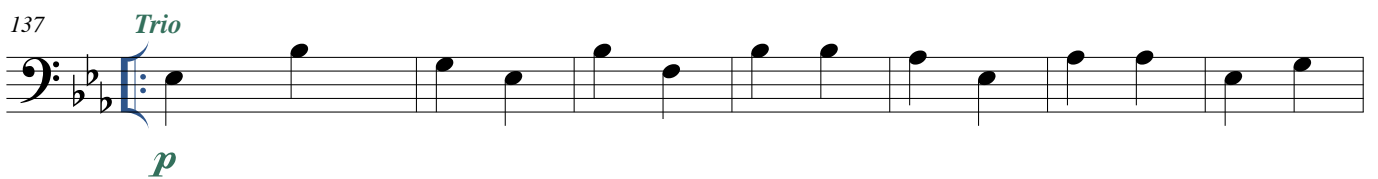
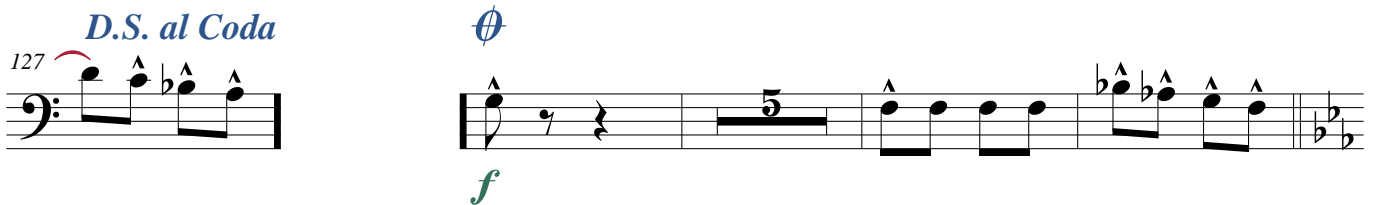
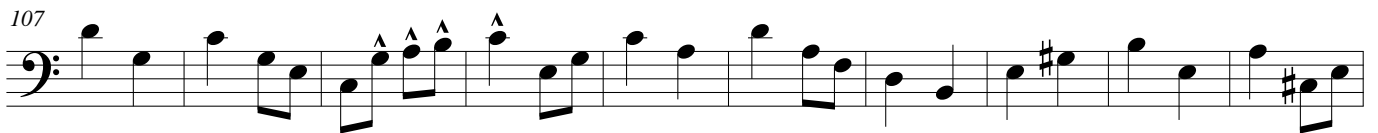
40

50 *f*

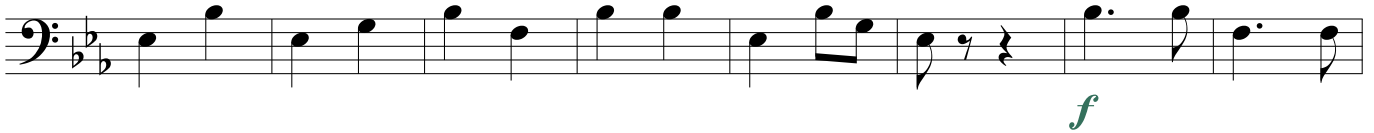
60 *p* *f*

68

À Coda  $\Phi$  1ª VEZ 2ª VEZ



163



171



179



188

