

Ten. Edison Camilo de Moraes

Tuba C

Dobrado

Composição e arranjo:
Eraldo Trindade

1
p *cresc.*

9
f

17
mf *ff* *mf* *f*

27
p

37

47
f

57
p

66
f

À Coda Φ 1ª VEZ

2ª VEZ

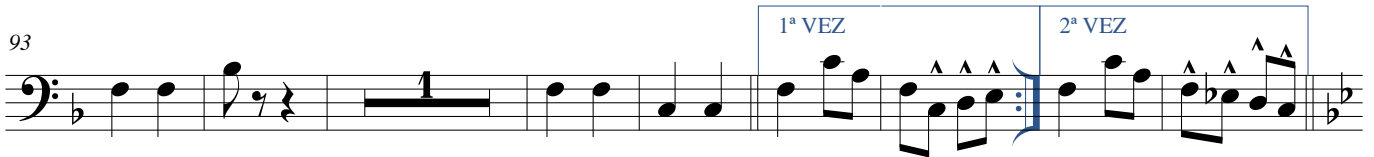
73



83



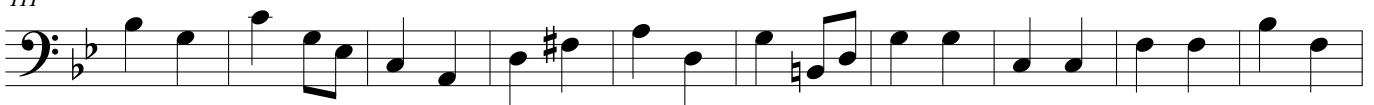
93



102



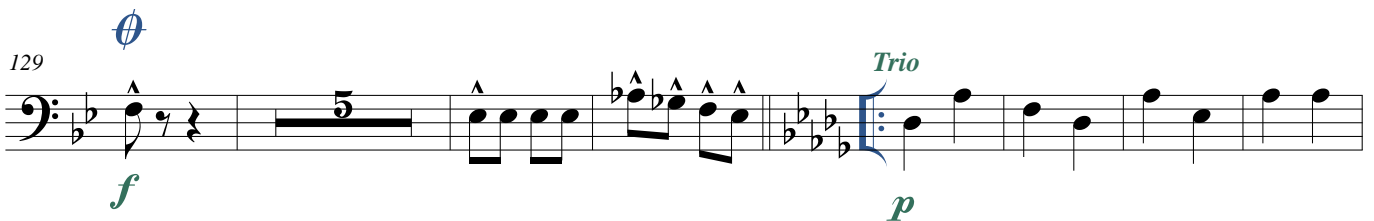
111



121



129



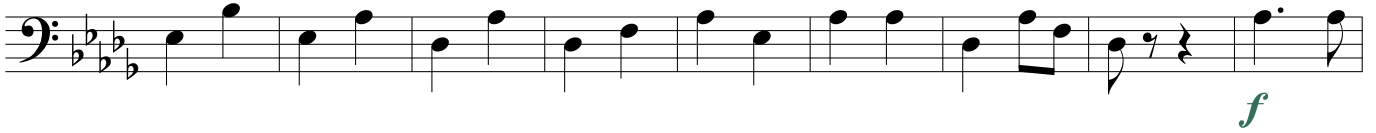
141



151



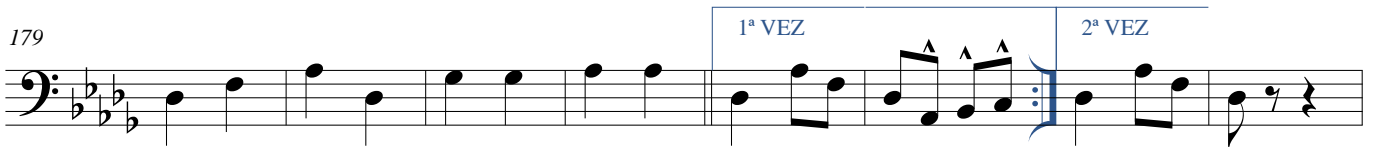
161



170



179



187

