

# Hino Oficial do Estado de Alagoas

Melodia: Benedito Silva — Letra: Luiz Mesquita

Eufônio C

Arranjo: Benedito Silva

Moderato ( $\text{♩} = 110$ )



First staff of music, starting with a bass clef, a key signature of one flat (B-flat), and a 4/4 time signature. The music begins with a whole rest followed by a quarter note G2. The melody consists of eighth and quarter notes with slurs and accents. A dynamic marking *f* is placed below the staff.

Second staff of music, starting with a measure rest and a quarter note G2. The melody continues with eighth and quarter notes, including a sharp sign (F#) above a note. A dynamic marking *f* is placed below the staff.

Third staff of music, starting with a measure rest and a quarter note G2. The melody continues with eighth and quarter notes, including a sharp sign (F#) above a note. A dynamic marking *f* is placed below the staff.

Fourth staff of music, starting with a measure rest and a quarter note G2. The melody continues with eighth and quarter notes, including a sharp sign (F#) above a note. A dynamic marking *f* is placed below the staff.

Fifth staff of music, starting with a measure rest and a quarter note G2. The melody continues with eighth and quarter notes. A dynamic marking *mf* is placed below the staff. A red wedge-shaped dynamic marking indicates a change to *mp*.

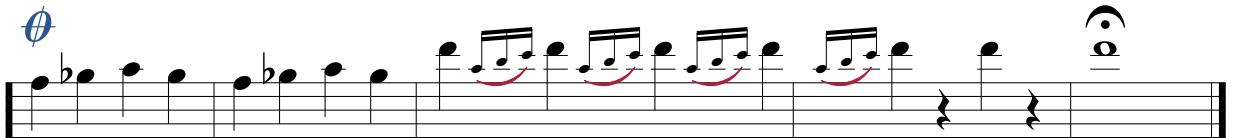
Sixth staff of music, starting with a measure rest and a quarter note G2. The melody continues with eighth and quarter notes. A dynamic marking *mf* is placed below the staff. A red wedge-shaped dynamic marking indicates a change to *mp*.

Seventh staff of music, starting with a measure rest and a quarter note G2. The melody continues with eighth and quarter notes, including triplet markings (3) below notes. A dynamic marking *mf* is placed below the staff.

Eighth staff of music, starting with a measure rest and a quarter note G2. The melody continues with eighth and quarter notes, including triplet markings (3) below notes. A dynamic marking *mf* is placed below the staff.



*mf*



*f*