

# Back From Houston

Guitarra Sl2

Reni Rocha

*Andto Sugerido* ♩ = 110

Musical staff in treble clef, 2/4 time signature. It begins with a whole rest followed by a bar with a bracketed '13' above it. This is followed by another whole rest and a bar with a bracketed '846' above it. The music then starts with a quarter rest, followed by a series of notes: a quarter note G4, a quarter note A4, a quarter note B4, a quarter note C5, a quarter note B4, a quarter note A4, a quarter note G4, and a quarter note F4. A forte (*ff*) dynamic marking is placed below the first note.

864

Musical staff in treble clef, 2/4 time signature. It contains a series of notes: a quarter note G4, a quarter note A4, a quarter note B4, a quarter note C5, a quarter note B4, a quarter note A4, a quarter note G4, and a quarter note F4 with a sharp sign (#).

872

Musical staff in treble clef, 2/4 time signature. It contains a series of notes: a quarter note G4, a quarter note A4, a quarter note B4, a quarter note C5, a quarter note B4, a quarter note A4, a quarter note G4, and a quarter note F4 with a flat sign (b).

880

Musical staff in treble clef, 2/4 time signature. It contains a series of notes: a quarter note G4, a quarter note A4, a quarter note B4, a quarter note C5, a quarter note B4, a quarter note A4, a quarter note G4, and a quarter note F4 with a flat sign (b).

888

Musical staff in treble clef, 2/4 time signature. It contains a series of notes: a quarter note G4, a quarter note A4, a quarter note B4, a quarter note C5, a quarter note B4, a quarter note A4, a quarter note G4, and a quarter note F4.

896

Musical staff in treble clef, 2/4 time signature. It contains a series of notes: a quarter note G4 with a sharp sign (#), a quarter note A4, a quarter note B4, a quarter note C5, a quarter note B4, a quarter note A4, a quarter note G4, and a quarter note F4 with a flat sign (b).

903

Musical staff in treble clef, 2/4 time signature. It contains a series of notes: a quarter note G4, a quarter note A4, a quarter note B4, a quarter note C5, a quarter note B4, a quarter note A4, a quarter note G4, and a quarter note F4.

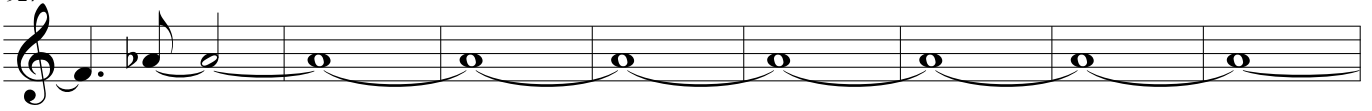
911

Musical staff in treble clef, 2/4 time signature. It contains a series of notes: a quarter note G4, a quarter note A4 with a flat sign (b), a quarter note B4, a quarter note C5, a quarter note B4, a quarter note A4, a quarter note G4, and a quarter note F4.

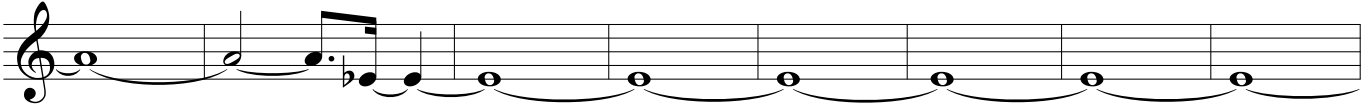
919

Musical staff in treble clef, 2/4 time signature. It contains a series of notes: a quarter note G4, a quarter note A4, a quarter note B4 with a sharp sign (#), a quarter note C5, a quarter note B4, a quarter note A4, a quarter note G4, and a quarter note F4.

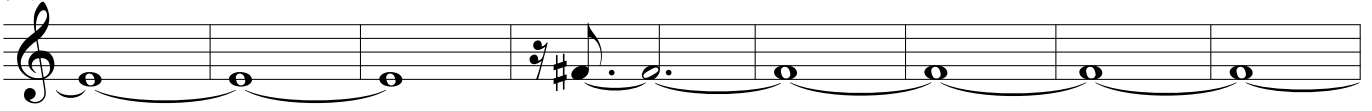
927



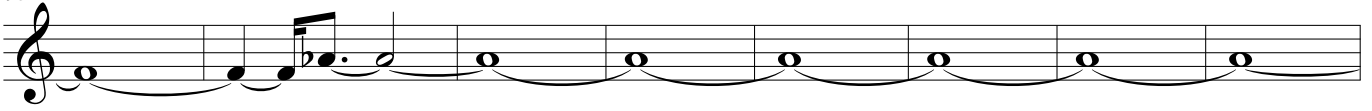
935



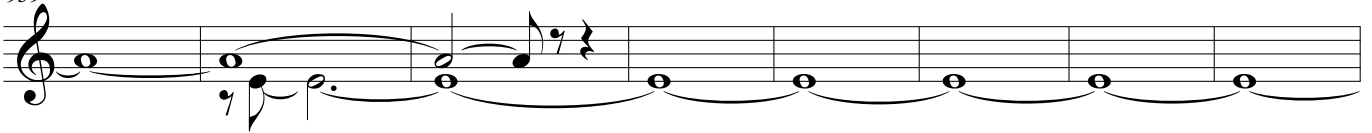
943



951



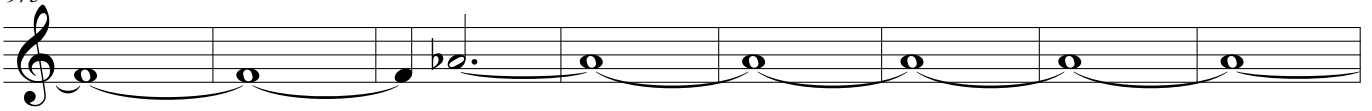
959



967



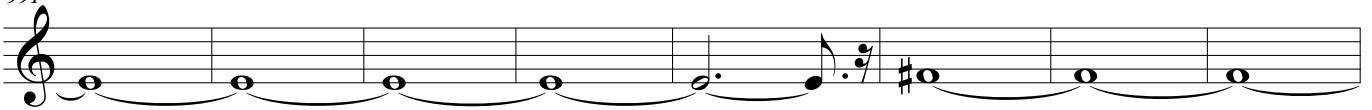
975



983



991



999



The image displays a musical score for the piece 'Back From Houston'. It consists of ten staves of music, all written in treble clef. The notation includes various note values such as quarter, eighth, and sixteenth notes, as well as rests. Slurs are used to group notes across multiple staves. Measure numbers 174 and 124 are indicated at the end of the eighth and tenth staves, respectively. The score is presented in a clean, black-and-white format.