

Broken

Guitarra2 Sl

Reni Rocha

Andto Sugerido ♩ = 120

The first staff of music is in bass clef with a 4/4 time signature. It begins with a *ff* dynamic marking. The first four measures consist of a series of quarter notes: G2, F2, E2, and D2. The fifth measure contains a half note G2, followed by a quarter rest. The sixth and seventh measures each contain a half note G2. The eighth measure contains a half note G2, followed by a quarter rest. The piece concludes with a fermata over the final G2 note.

8

The second staff of music, starting at measure 8, continues the sequence of quarter notes: G2, F2, E2, and D2. It consists of eight measures, each containing a single quarter note.

16

The third staff of music, starting at measure 16, continues the sequence of quarter notes: G2, F2, E2, and D2. It consists of eight measures, each containing a single quarter note.

24

The fourth staff of music, starting at measure 24, continues the sequence of quarter notes: G2, F2, E2, and D2. It consists of eight measures, each containing a single quarter note.

32

The fifth staff of music, starting at measure 32, continues the sequence of quarter notes: G2, F2, E2, and D2. It consists of eight measures, each containing a single quarter note.

40

The sixth staff of music, starting at measure 40, continues the sequence of quarter notes: G2, F2, E2, and D2. It consists of eight measures, each containing a single quarter note.

48

The seventh staff of music, starting at measure 48, continues the sequence of quarter notes: G2, F2, E2, and D2. It consists of eight measures, each containing a single quarter note.

56

The eighth staff of music, starting at measure 56, continues the sequence of quarter notes: G2, F2, E2, and D2. It consists of eight measures, each containing a single quarter note.

64

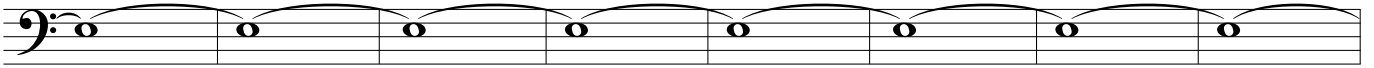
The ninth staff of music, starting at measure 64, continues the sequence of quarter notes: G2, F2, E2, and D2. It consists of eight measures, each containing a single quarter note.

Broken

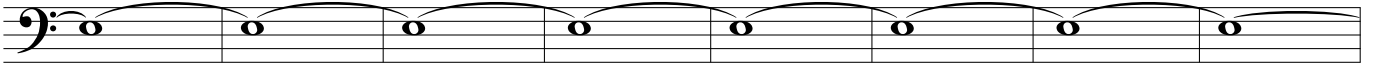
72



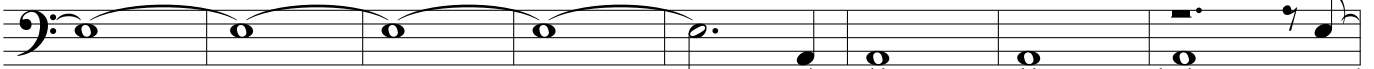
80



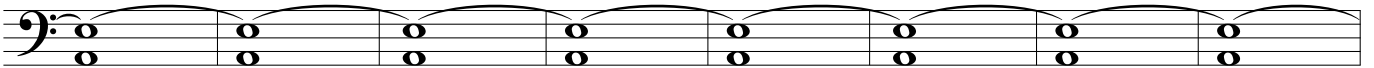
88



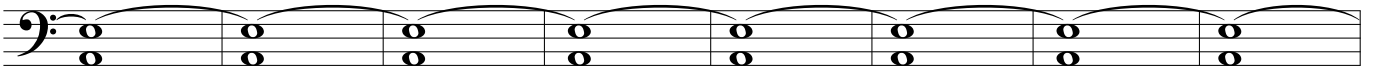
96



104



112



120

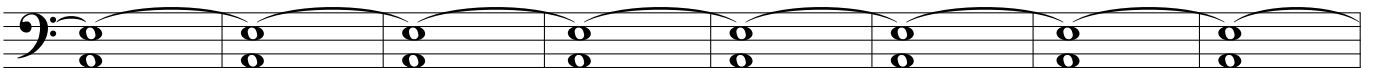


3

128



136

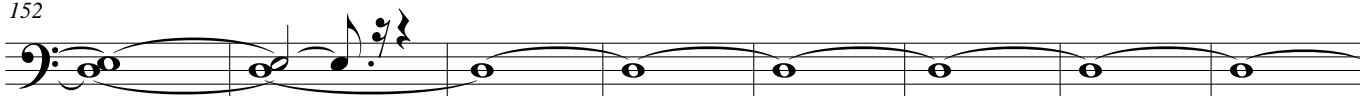


144

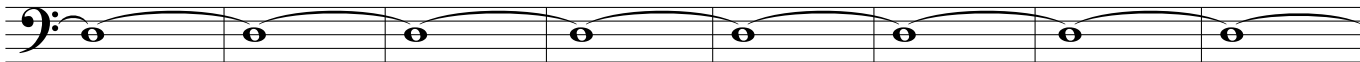


Broken

152



160



168



176



184



192



200



230



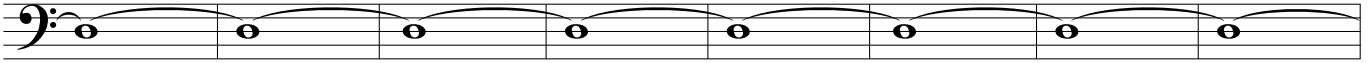
238



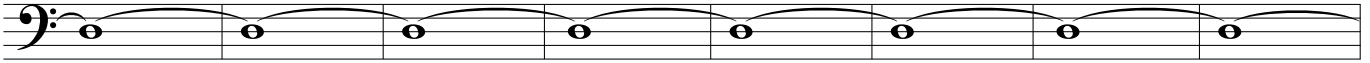
246



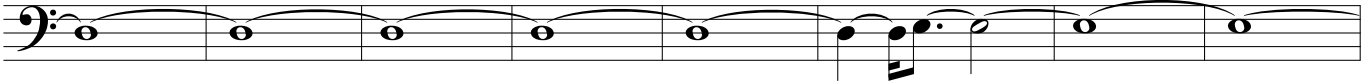
254



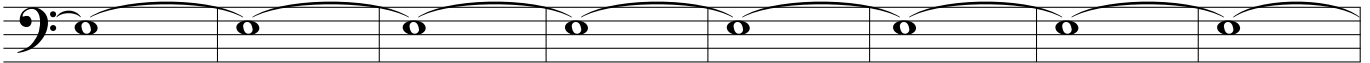
262



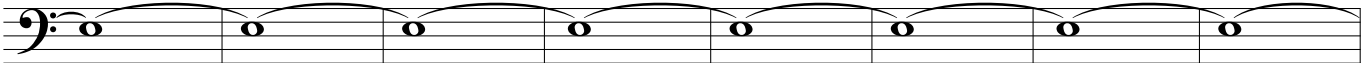
270



278



286



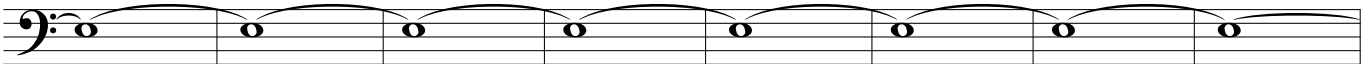
294



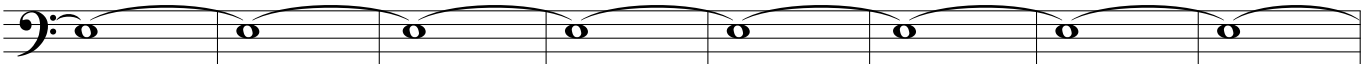
325



333



341

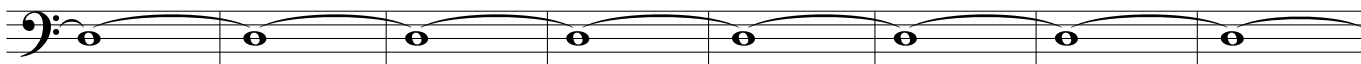


349

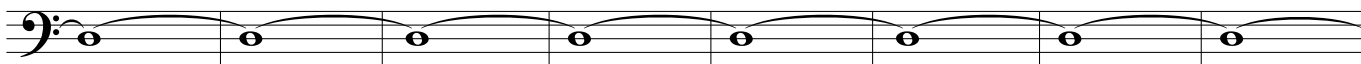


Broken

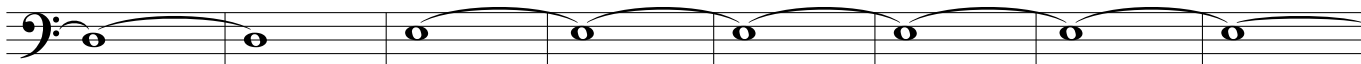
357



365



373



381



389



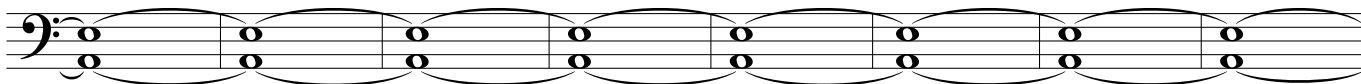
397



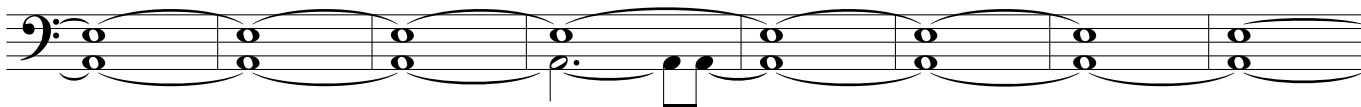
405



413



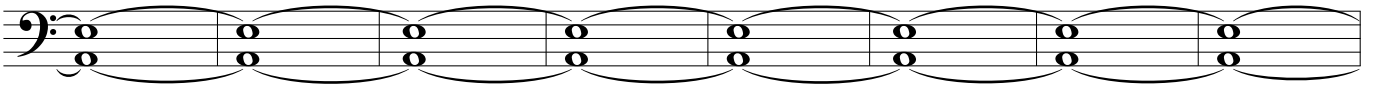
421



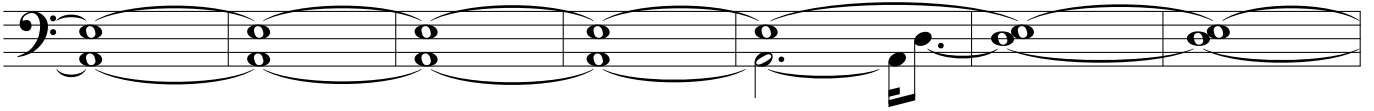
429



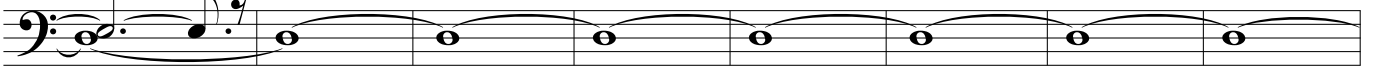
437



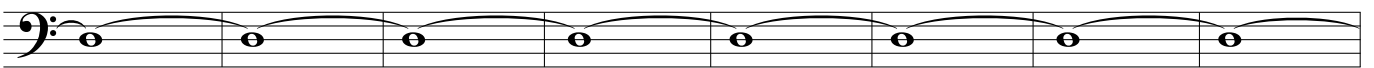
445



452



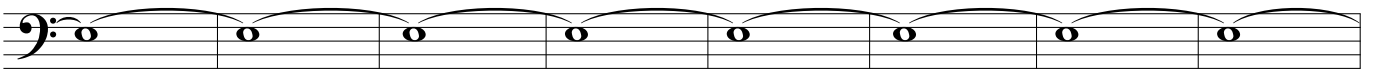
460



468



476



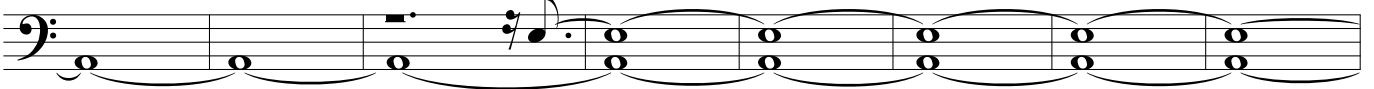
484



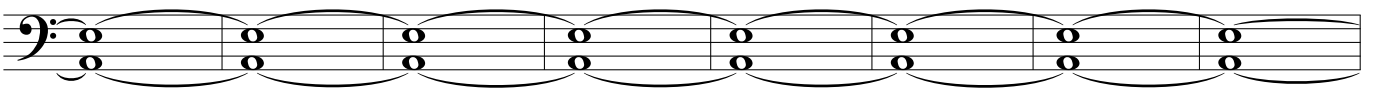
492



500

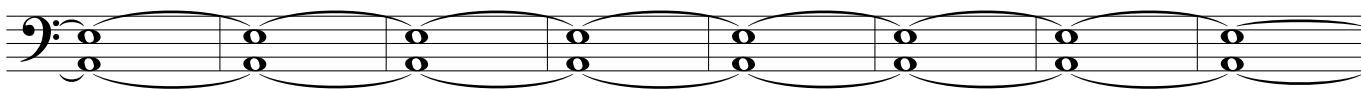


508



Broken

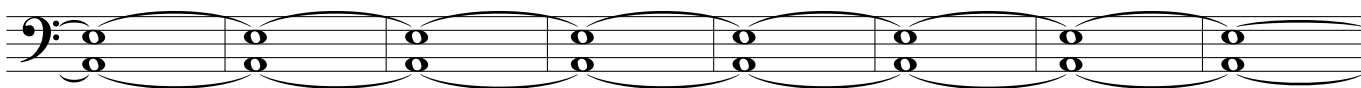
516



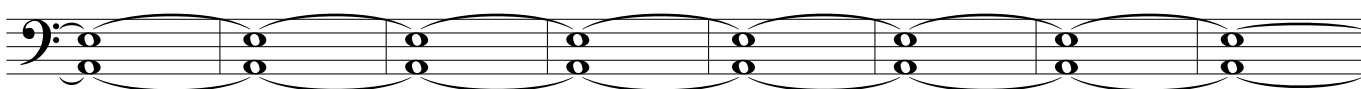
524



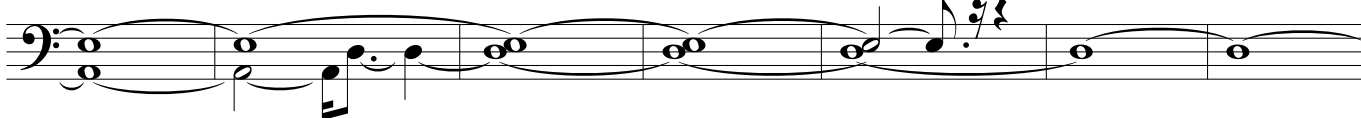
532



540



548



555



563



571



579



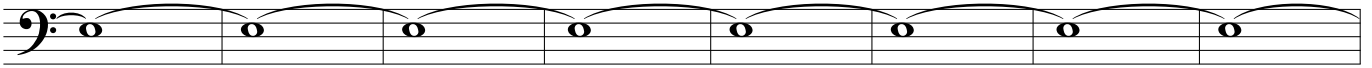
587



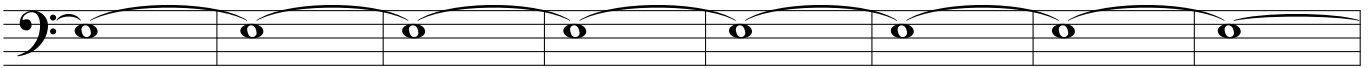
595



625



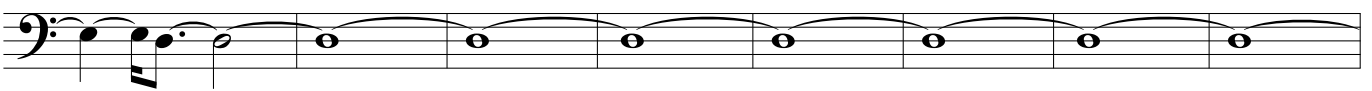
633



641



649



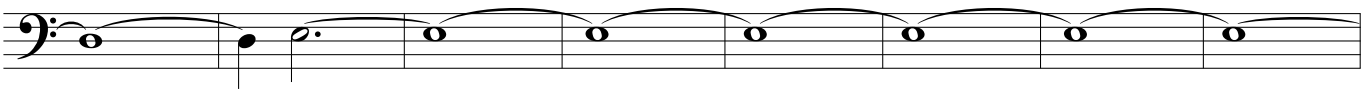
657



665



673



681



689

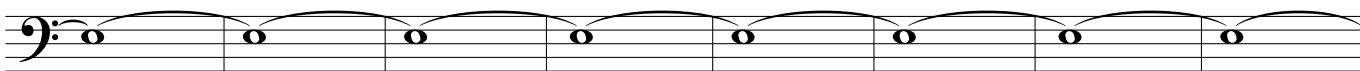


Broken

697



727



735



743



751



759



767



775



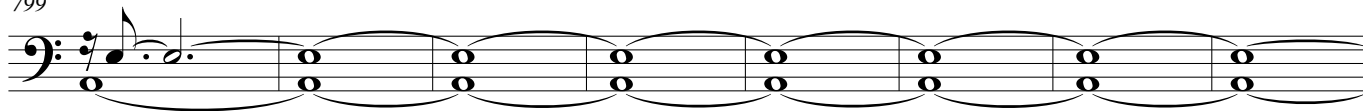
783



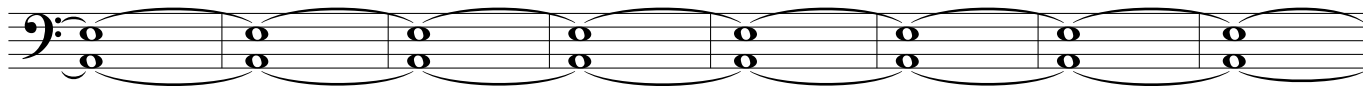
791



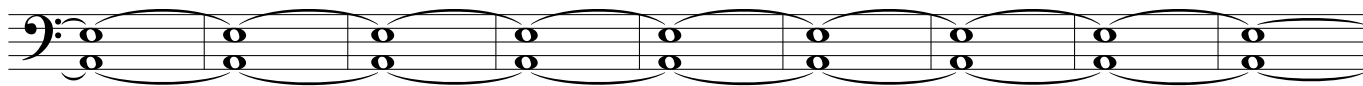
799



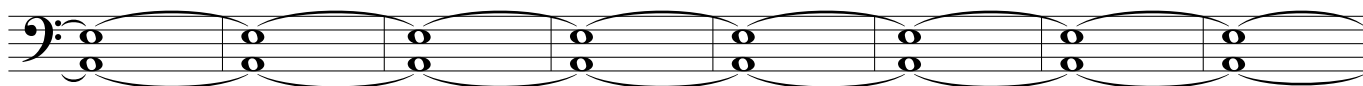
807



815



824



832



840

