

# Parado em Belém

Surdo

Choro

Composição e arranjo:  
José Gomes Brandão

The first staff of music is in 2/4 time. It begins with a treble clef and a key signature of one flat. The melody starts with a quarter rest, followed by a series of eighth notes: G4, A4, Bb4, A4, G4, F4, E4, D4. The piece concludes with a double bar line, a repeat sign, and three measures of repeat signs. Dynamics include *ff* (fortissimo) and a blue section sign.

10

A staff of ten measures, each containing a repeat sign (double bar line with dots).

20 *À Coda*  $\emptyset$

A staff of ten measures. The first measure contains a quarter note G4. The remaining nine measures each contain a repeat sign.

29

A staff of ten measures, each containing a repeat sign.

39

A staff of ten measures, each containing a repeat sign.

49

A staff of ten measures, each containing a repeat sign.

59

A staff of ten measures, each containing a repeat sign.

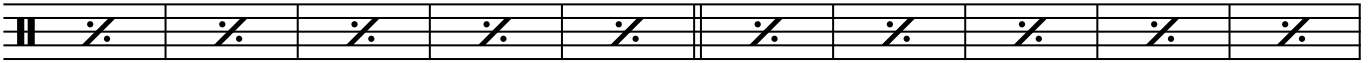
69

A staff of ten measures, each containing a repeat sign.

79

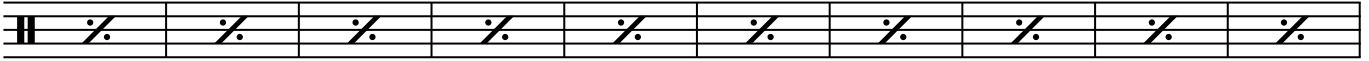
A staff of ten measures, each containing a repeat sign.

89

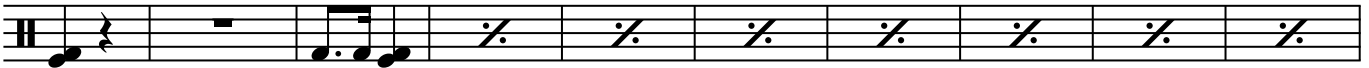


*ff*

99



109



119



126 *D.S. al Coda*



⊘



*ff*