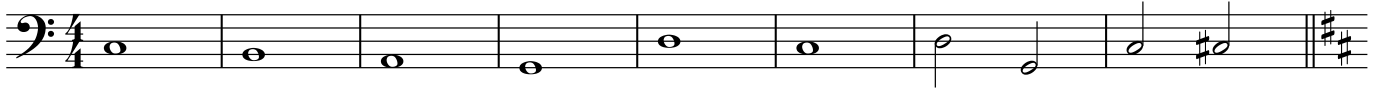


ESTRELA RADIOSA

Contrabaixo

Maestro Bacalhau

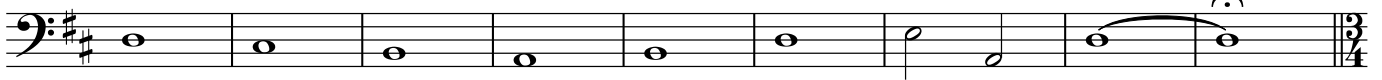
Lento
pizz.



9 **9**



17 **17**



26 **26** Valsa ♩ = 160



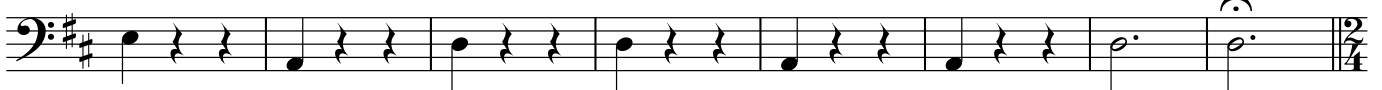
34



43



50



58 **58** Samba ♩ = 90



69



80



V.S.

Contrabaixo

2

91 94 ♩ = 70

102 2. Coco ♩ = 95

110 111

118 1. 2. 120 Guerreiro ♩ = 160

127

135

143 1. 2. Lento 9

159 1. 2.